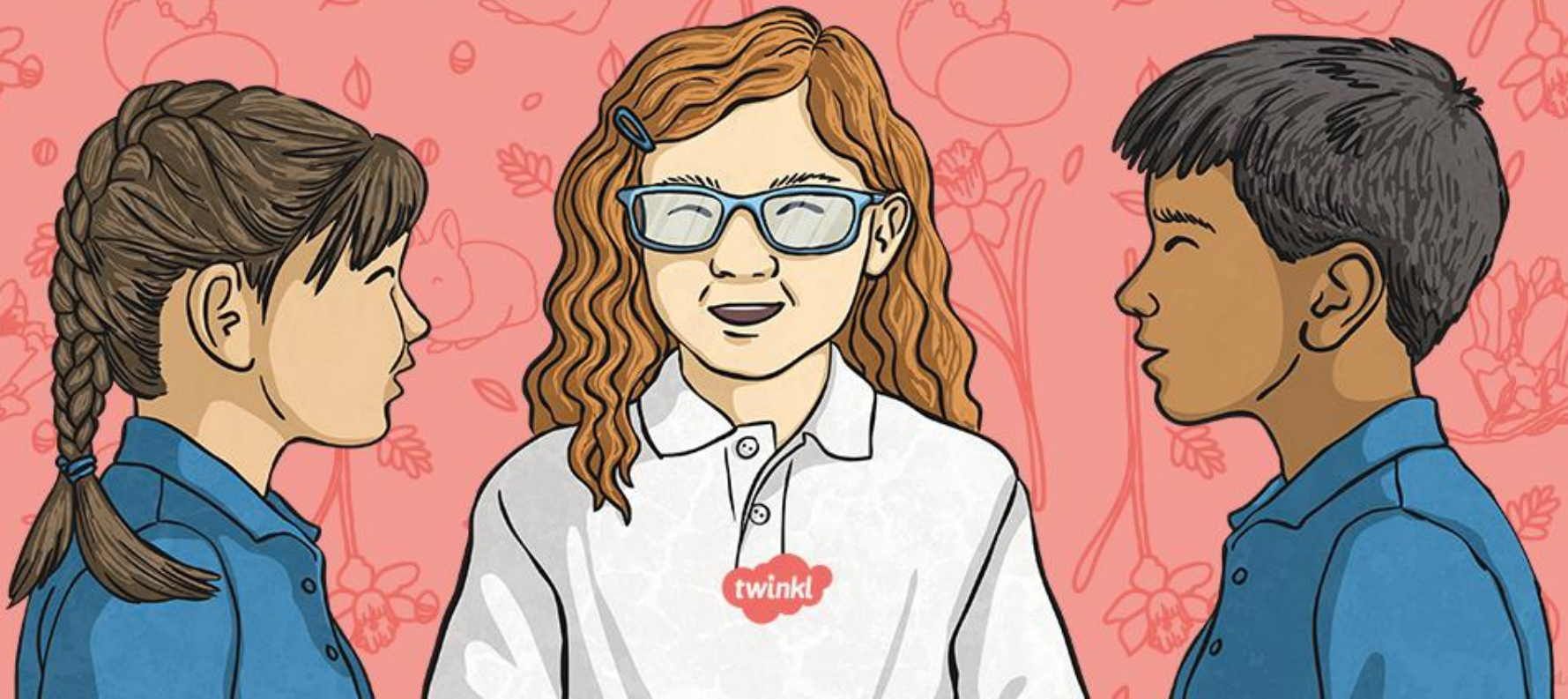


**Adding -ing, -ed, -er, -est  
and -y to words ending in -e  
with a consonant before it**



A **root word** is the basic form of a word before any parts are changed or added on. We have seen how root words can be changed by adding different **suffixes** (endings)...

copy

**copier**

marry

**marrying**

baby

**babies**

happy

**happiest**

cry

**cries**



Each sentence has a root word that ends in -e with a consonant before it.

Friends are **nice** to each other.

When my dad cleans his motorbike,  
he rubs it to get it to **shine**.

The ghost train makes my sister  
scream, but it doesn't **scare** me!

At the weekends, we put on our  
walking boots and go for a long **hike**.



We can change words by removing the -e before adding the suffixes -ed, -ing, -er, -est, -y. Look...to change the root word **hike**...

Click on the boxes to change the root word

hike



hik



hiked

Remove the -e before adding

ed



We can change words by removing the -e before adding the suffixes -ed, -ing, -er, -est, -y. Look...to change the root word **hike**...

Click on the boxes to change the root word

hike



hik



hiking

Remove the -e before adding

ing



We can change words by removing the -e before adding the suffixes -ed, -ing, -er, -est, -y. Look...to change the root word **nice**...

Click on the boxes to change the root word

nice



nic



nic+er

Remove the -e before adding

er



We can change words by removing the -e before adding the suffixes -ed, -ing, -er, -est, -y. Look...to change the root word **nice**...

Click on the boxes to change the root word

nice



nic



nic+est

Remove the -e before adding

est





What is the root word here?



?

=

shining

or

shiny

Remove the -e before adding

ing

or

y





Here are this week's spellings to practise.

Work hard to  
learn them and  
the rules we  
have looked at  
today.

hike  
hiking  
hiked  
hiker  
nicer

nicest  
shiny  
shining  
scary  
scaring

