

# Adverbs Where the Root Word Ends with 'ic' or 'al'



This week, we are going to look again at adverbs.  
Who can remember what an adverb is?

An adverb is a word or phrase that usually describes a verb. Remember, a verb describes an action. Adverbs can describe time, frequency, manner, place or to what degree something is happening.



Working with a partner, you have **five minutes** to turn these root words into adverbs. Use a dictionary if you need to.

basic

dramatic

occasional

accidental

comic

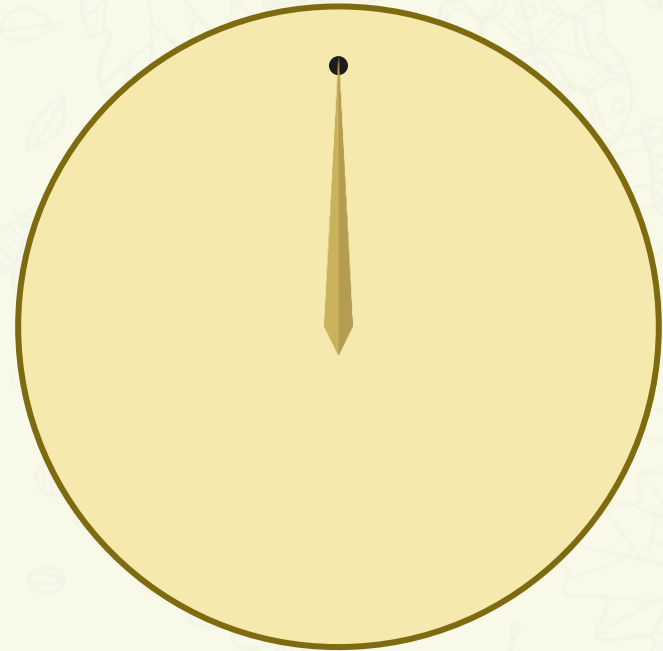
magic

actual

frantic

eventual

tragic



Start

Working with a partner, you have **five minutes** to turn these root words into adverbs. Use a dictionary if you need to.

basic

dramatic

occasional

accidental

comic

magic

actual

frantic

eventual

tragic

Do you notice anything about the root words and how they change?



Look at how the root words change...

basic ally

basically

occasional ally

occasionally

comic ally

comically

actual ally

actually

eventual ally

eventually

dramatic ally

dramatically

Look at how the root words change...

dramatic ally

dramatically

accidental ally

accidentally

magic ally

magically

frantic ally

frantically

tragic ally

tragically

Most root words that end in 'ic' or 'al' change to end with the letter pattern **'ally'** when they are turned into adverbs.

Work with a partner to play this adverb quick quiz. Write your answers on your whiteboards. Which of your words fits in each sentence?

When the lamp was rubbed, the genie magically appeared in a plume of smoke.

Answer



Can you think of the -ally adverb that fits in this sentence?

Work with a partner to play this adverb quick quiz. Write your answers on your whiteboards. Which of your words fits in each sentence?

After a long delay, it was eventually time to let the passengers board the aeroplane.

Answer



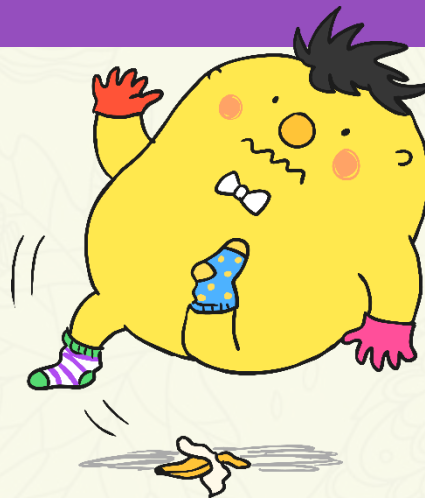
Can you think of the -ally adverb that fits in this sentence?



Work with a partner to play this adverb quick quiz. Write your answers on your whiteboards. Which of your words fits in each sentence?

Accidentally \_\_\_\_\_, Mr Whoops tripped over the banana skin and landed in a heap on the hard floor.

Answer

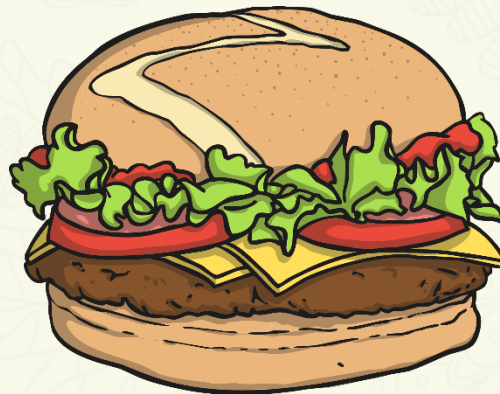


Can you think of the -ally adverb that fits in this sentence?

Work with a partner to play this adverb quick quiz. Write your answers on your whiteboards. Which of your words fits in each sentence?

Occasionally \_\_\_\_\_, Dad would take them out for a burger as a special treat.

Answer



Can you think of the -ally adverb that fits in this sentence?

Work with a partner to play this adverb quick quiz. Write your answers on your whiteboards. Which of your words fits in each sentence?

The terrified children ran frantically away from the haunted house.

Answer



Can you think of the -ally adverb that fits in this sentence?

Here are all your spelling words for this week.

Don't forget that all these adverbs end with the letter pattern -ally.



#### Week 4

Creating adverbs  
using the suffix -ly  
(root words end in  
'ic' or 'al')

basically  
frantically  
dramatically  
magically  
tragically  
comically  
actually  
accidentally  
occasionally  
eventually

